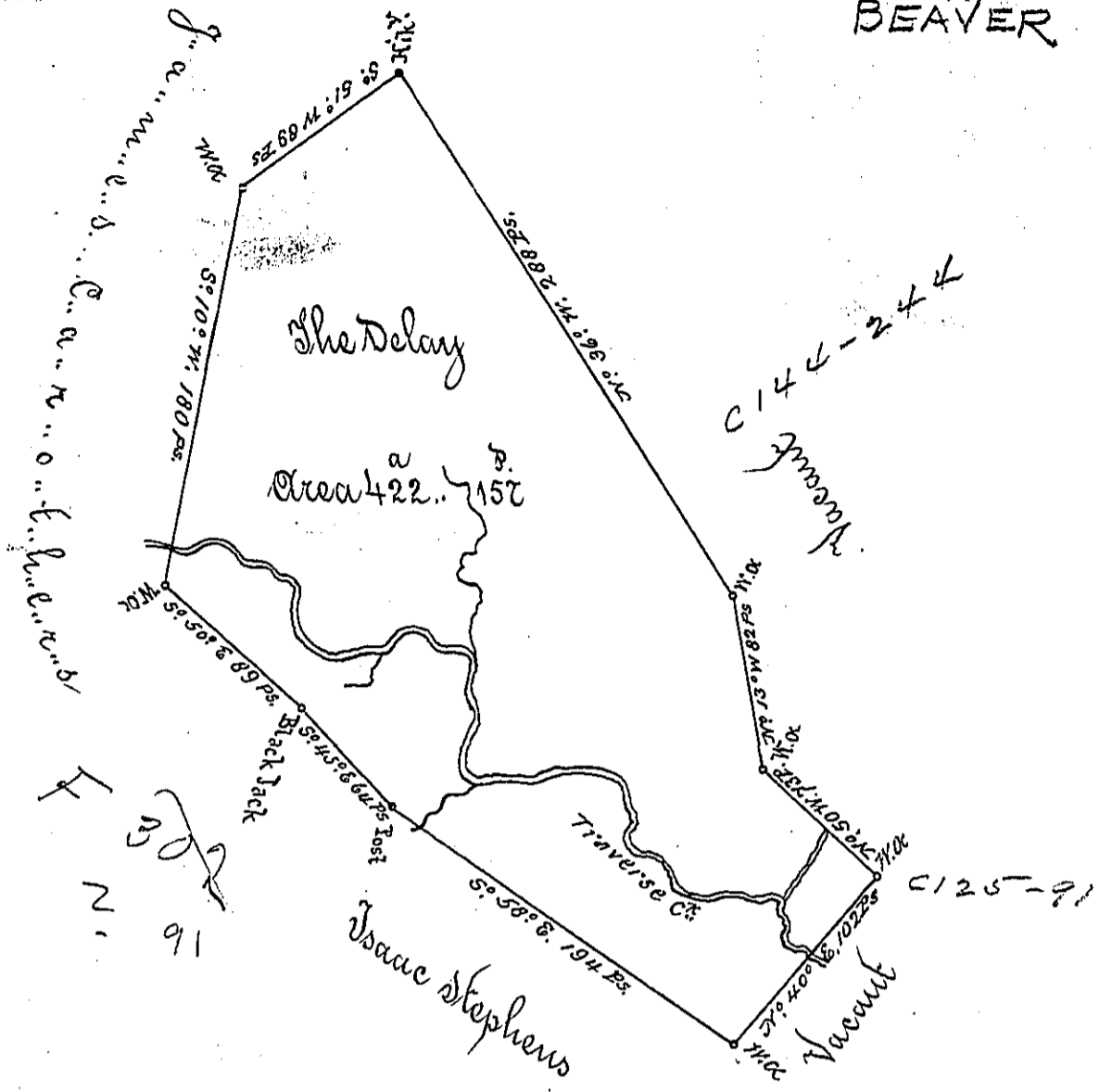


Harover - 162
BEAVER ✓



A Draught of a survey called "The Delay" situate on Traverse Cr. a (Branch of Beavers) in Wash-
 ington County contain^g 422 ac^s 157 ac^s and the allow^{ce} be executed Jan^y the 19th 1786 in consequence
 of Certif^{ce} for 400 ac^s granted to Heagins Dale by the Commiss^{rs} appointed by Virg^a to adjust
 the Claims to unpatent^d Lands in the Counties Honou^g Joh^g and Ohio, and duly entered
 with the County Sur^v as appears from the List of Entries transmitted from the Sur^v
 Gen^l's Office Oct^r 28th Nov^r 80

Rec^d 15th May 1787.
 J^r. Lukens Esq. S. G^l

Presley Keavill }
 Heatt^h Ritchie } D^s

IN TESTIMONY that the above is a copy of the original remaining on file in
 the Department of Internal Affairs of Pennsylvania, made
 conformably to an Act of Assembly approved the 16th day of
 February, 1833, I have hereunto set my Hand and caused
 the Seal of said Department to be affixed at Harrisburg,
 this seventh day of January 1902

James W. Fatta
 Secretary of Internal Affairs.